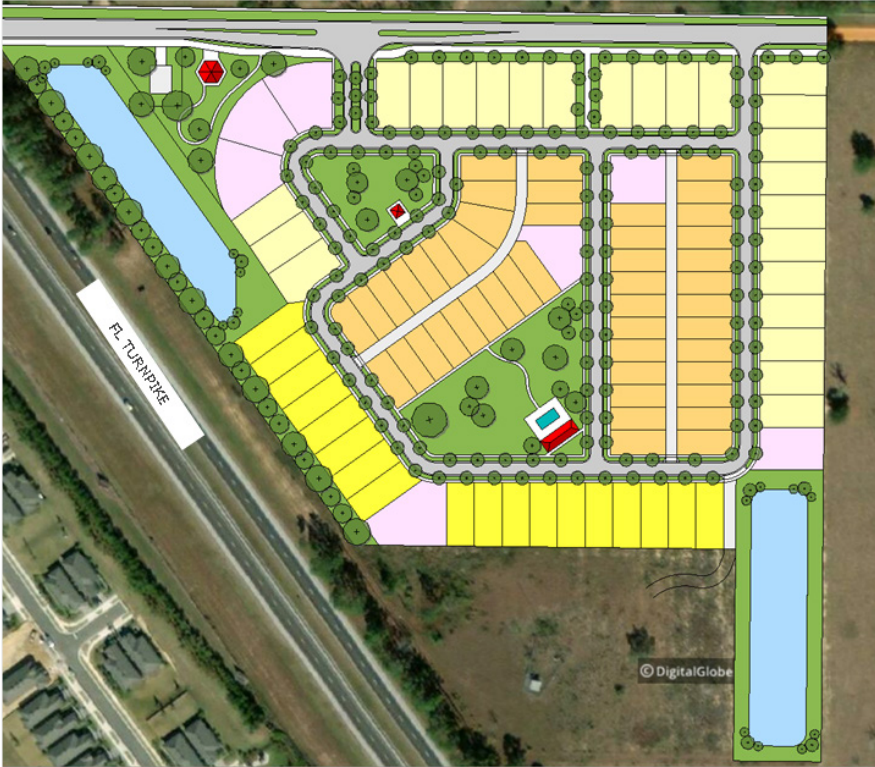


HILLS OF MONTVERDE



PROJECT PROFILE

Client

Picket Fences American Homes

Year

2021

Project Area

23.5 Acres

Hills of Montverde, Montverde FL

Located in Montverde, Florida adjacent to the Florida Turnpike in metro Orlando, the Hills of Montverde is a proposed development of an 23.5 acre residential “front porch” community. The community will include a mix of bungalow homes, drive-beside homes, garden homes, and some custom homes centered around centralized green spaces which act as outdoor living room for residents to enjoy. The greens will be amenitized with walking paths, a community amenity, and a centralized mail pavilion. The mix of unit types in a smaller neighborhood serve to create the feeling of a complete community.

