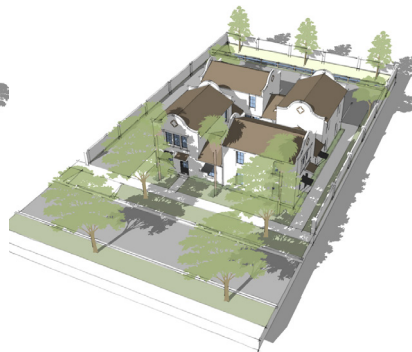


MISSING MIDDLE HOUSING



Missing Middle Housing, Groveland & Lake County, Florida

In Central Florida, communities are struggling with affordable and accessible housing, and municipalities all over Central Florida are searching for ways to encourage the development of missing middle housing. Our firm has dedicated time to research and study how missing middle housing can be built under current regulations within the city of Groveland, and has conducted research to discover and recommend small code changes that will have a big impact on the construction of missing middle and affordable housing. We assisted city staff in a number of presentations on this topic including to the Lake County Housing for All group. We believe that the city of Groveland can be a model for other municipalities in Lake County and Central Florida in the quest for providing an affordable mix of housing solutions.

